

## 1. Rasyonel sayılarla işlemler

$$\frac{2}{3} - \frac{2}{3} = 0,32.k \text{ ise } k \text{ kaçtır?}$$

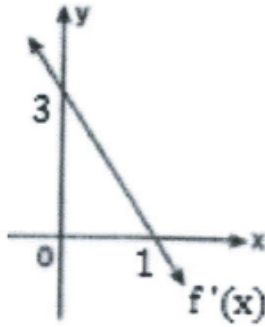
$$\text{If } \frac{2}{3} - \frac{2}{3} = 0,32.k, \text{ what is the value of } k?$$

- A) -10  
B)  $-\frac{16}{5}$   
C) -1  
D)  $\frac{5}{16}$   
E) 1

## 2. Türev

Şekilde  $f'(x)$  fonksiyonunun grafiği verilmiştir.

The following is a graph of the function  $f'(x)$ .



$f(0) = 3$  olduğuna göre  $f(2)$  kaçtır?

If  $f(0) = 3$  is true, what is the value of  $f(2)$ ?

- A) -3  
B) -1  
C) 3  
D) 5  
E) 6

$$\frac{2}{3} - \frac{2}{3} = 0,32.k \quad .1$$

وفقا لذلك ما هي قيمة  $k$ ؟

-10 (A)

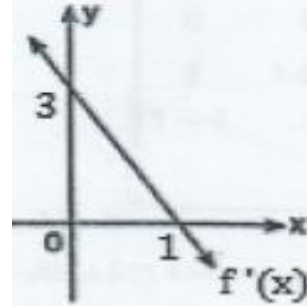
$-\frac{16}{5}$  (B)

-1 (C)

$\frac{5}{16}$  (D)

1 (E)

2. الرسم البياني للدالة  $f'(x)$  هو:



إذا كان  $f(0) = 3$  ما هي قيمة  $f(2)$ ؟

-3 (A)

-1 (B)

3 (C)

5 (D)

6 (E)

## 3. Matrisler

$$\begin{bmatrix} 2 & 1 \\ -1 & 3 \end{bmatrix} \cdot \begin{bmatrix} x \\ y \end{bmatrix} = \begin{bmatrix} 5 \\ 8 \end{bmatrix} \text{ ise } x.y = ?$$

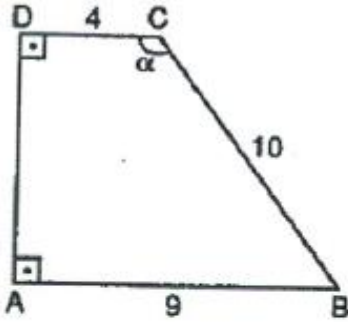
$$\text{If } \begin{bmatrix} 2 & 1 \\ -1 & 3 \end{bmatrix} \cdot \begin{bmatrix} x \\ y \end{bmatrix} = \begin{bmatrix} 5 \\ 8 \end{bmatrix} \text{ is true, then } x.y = ?$$

- A) 3
- B) 5
- C) 6
- D) 8
- E) 13

## 4. Geometri- Yamuk

ABCD bir yamuk,

ABCD is a trapezoid



Verilenlere göre  $\alpha$  kaç derecedir?

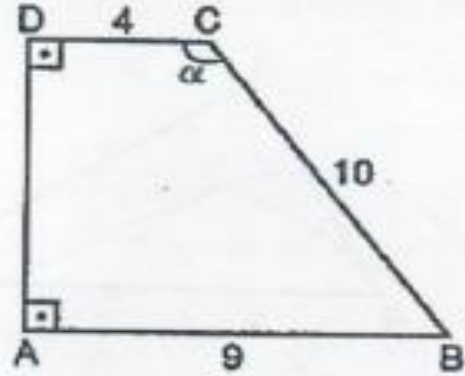
According to the above, how many degrees is  $\alpha$ ?

- A) 100
- B) 120
- C) 135
- D) 150
- E) 165

$$.3 \text{ . إذا كان } \begin{bmatrix} 2 & 1 \\ -1 & 3 \end{bmatrix} \cdot \begin{bmatrix} x \\ y \end{bmatrix} = \begin{bmatrix} 5 \\ 8 \end{bmatrix} \text{ فما هي قيمة } x.y ?$$

- 3 (A)
- 5 (B)
- 6 (C)
- 8 (D)
- 13 (E)

ABCD شبه منحرف



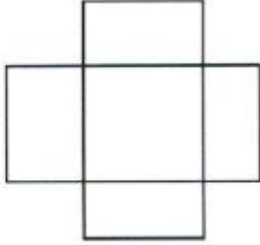
كم قيمة الزاوية  $\alpha$  وفقا لهذا؟

- 100 (A)
- 120 (B)
- 135 (C)
- 150 (D)
- 165 (E)

5. Şekil- Sayı ilişkisi

Verilen şekilde kaç tane dikdörtgen vardır?

How many rectangles are there in the shape given?

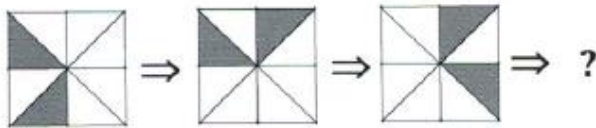


- A) 2
- B) 5
- C) 8
- D) 11
- E) 12

6.

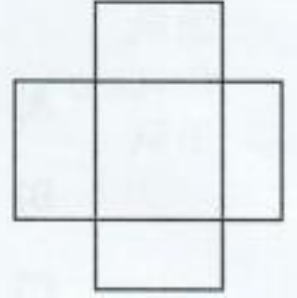
Şekilde verilen örüntüye göre ? yerine hangi şekil gelmelidir?

According to the following sequence, which shape should replace with "?" sign?



- A)
- B)
- C)
- D)
- E)

كم عدد المستطيلات في الشكل التالي؟



- 2 (A)
- 5 (B)
- 8 (C)
- 11 (D)
- 12 (E)

أي واحد مما يلي يجب أن يأتي بدلاً من "?" وفقاً للنمط المعطى فيما يلي؟



- A)
- B)
- C)
- D)
- E)

## 7. Şekil dizisinde eksik şekli bulma

Toplama ve çarpma tablosunda  $a$  ve  $b$  birer sayıdır. Buna göre  $a^2 + b^2$  değeri kaçtır?

In the addition and multiplication tables below,  $a$  and  $b$  are individual numbers. Therefore, what is the value of  $a^2 + b^2$ ?

+	a	b
a		
b	7	

x	a	b
a		5
b		

- A) 12  
B) 21  
C) 35  
D) 39  
E) 43

إن  $a$  و  $b$  رقمان في كل من جدول الجمع و جدول الضرب. وعلى هذا كم يساوي  $a^2 + b^2$  ؟  
 $a \times b = 5$   
 $a + b = 7$

+	a	b
a		
b	7	

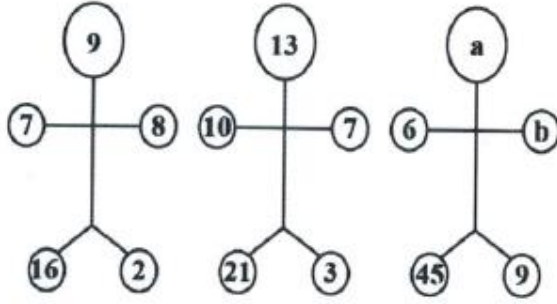
x	a	b
a		5
b		

- 12 (A)  
21 (B)  
35 (C)  
39 (D)  
43 (E)

## 8. Şekli denklem sistemi

Aşağıdaki şekillerde sayılar belli bir örüntüye göre verilmiştir.

The numbers below have been given according to a fixed sequence.



Buna göre  $a : b$  kaçtır?

Therefore, what is the value of  $a : b$ ?

- A) 1
- B) 3
- C) 5
- D) 6
- E) 1

الأرقام في الأشكال الآتية أنت على نمط ثابت.

فعلى هذا كم  $a : b$  ؟

- 1 (A)
- 3 (B)
- 5 (C)
- 6 (D)
- 1 (E)